

# cnPilot™ E400 Indoor Access Point

## EXPANDING THE ENTERPRISE.

Designed for wireless service providers of both enterprise and distributed enterprise networks, cnPilot™E400 offers WLAN that is scalable, secure, and reliable. The enterprise-grade 802.11ac access points support on-premise or cloud management in a solution that rolls out quickly, blends in to the environment and is easy to operate.

**Cloud Management:** backed by Cambium’s cnMaestro™ cloud manager offering end to end visibility of the network and customer devices

- Out-of-the box zero touch onboarding
- Stateful alarms and dashboard views
- Multiple management options available including cloud-based, SNMP and an enriched set of RESTful interfaces

**End-to-end Troubleshooting:** Single dashboard view and rich statistics ensure rapid root cause detection and issue resolution

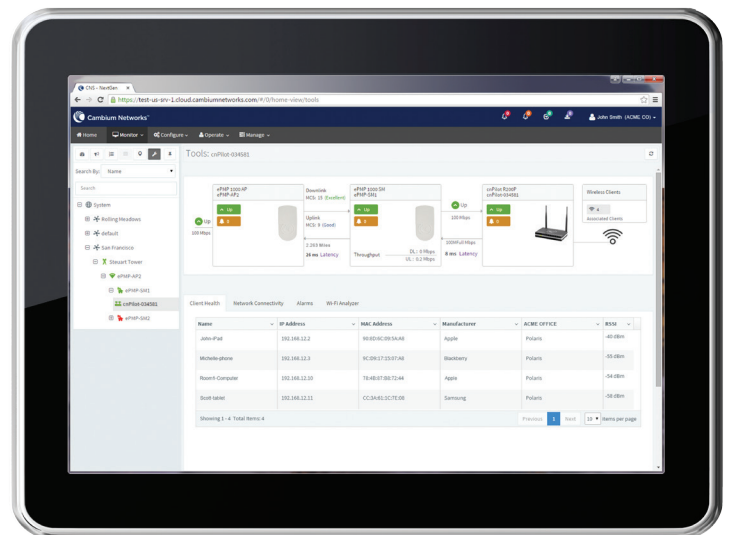
- One-click functionality reveals the health of all network nodes related to the problem area
- Troubleshoot end user client connectivity on any WLAN from a single console
- No truck roll required to debug wired or wireless connectivity configurations

## Network Monetization:

- Integration with 3rd party external guest access solutions
- Onboard guest access portal for simple deployments

## Security:

- Support WPA2 Enterprise and WPA2 PSK
- Secure connection over HTTPS back to the cloud for management



cnMaestro™ Dashboard

## KEY FEATURES:

- 802.11ac concurrent dual band
- 2x2 MIMO
- 16 SSIDs supporting 256 concurrent users
- Cloud managed with no on-site controller required
- On-board captive portal
- Rate limiting per SSID and client
- Fast roaming across access points (AP)
- Auto channel selection for allocation of wireless spectrum

\*Some of the features listed below will be roadmap available

## ACCESS POINT SPECIFICATIONS

Type	Dual band 2.4 & 5 GHz 802.11ac Indoor APs
Stream	2x2 MIMO
Range	180 m (600 Ft)
Concurrent Clients	256
Max Throughput	+1.167 Gpbs
SSID	16
Antenna	Integrated Omni
Antenna Gain	5 dBi
Polarization	Dual Polarized
Antenna coverage	Omni (360°)
Ethernet Ports	One (1) x 1 Gigabit Ethernet (GigE)
Physical lock	Kensington key hole
Power Supply	802.3af injector or Powered Ethernet switch
Power Consumed	13W (max)
Dimensions (cm)	18 cm x 18 cm x 3 cm
Weight	350g
Temperature	0°C to +50°C
Certification	FCC, CE
Tx Power	25 dBm

## WiFi FEATURES

MANAGED	Access point can be deployed at large scale in feature rich <i>cnMaestro</i> controller managed mode
AUTONOMOUS MODE	Capable of operating autonomously when connection to <i>cnMaestro</i> is lost
DEPLOYMENT MODEL	Stand-alone APs or Cloud Managed WiFi APs
SECURE WLAN	WPA-TKIP, WPA2 AES
HOTSPOT CAPTIVE PORTAL	Stand-alone mode AP based hotspot server. Also supports hotspot redirection to 3rd party Hotspot server
AUTHENTICATION	Secure Web page, RADIUS based 802.1x including EAP-SIM/AKA, EAP-PEAP, EAP-TTLS, and EAP-TLS
SCHEDULED SSID	Turn SSID ON/OFF on a daily/weekly/time of day basis
GUEST ACCESS	Supported
DATA LIMITING	Rate limiting of client traffic: Caps utilization based on data rates, max data rates and time interval
SUBSCRIBER QOS	WMM
CLIENT ISOLATION	Yes
FAST ROAMING	Controller-less fast roaming supported
AUTOMATIC CHANNEL SELECTION	Yes
NAT	Yes
DHCP SERVER	Yes
FIREWALL	Yes
ACL, DNS-ACL	Yes
BAND STEERING	Steers 802.11ac and 802.11n clients that may otherwise be using a slower 2.4 GHz to the higher throughput capable 5 GHz band

## MANAGEMENT FEATURES

GUI	Simple intuitive web browser enabled tabbed GUI to simplify complex network views
COMMON FRAMEWORK	One-single-pane-of-glass from which to manage both the Point-to-point, Point-to-multipoint and Cambium PMP WLAN solutions
FRICTIONLESS ON-BOARDING	Secure large scale bulk onboarding Zero touch bulk configuration and provisioning
DEVICE INVENTORY	Inventory tracking and reporting
MONITORING	Insightful status monitoring; rich visibility to device lifecycle Alarms and events management – Critical/Major/Minor Statistics graphs and table display Alarm traffic light display
KEY STATS MONITORING	Near real time stats monitoring, aggregation and reporting
SOFTWARE UPGRADE	Ability to upgrade multiple WiFi devices at a time

### Ordering Information

802.11ac dual band concurrent Enterprise class ceiling mount access point with PoE injector with cord and CAT5 Ethernet cable. Available for FCC(C000100W400A), EU-(C000100W401A), AUS/NZ (C000100W402A), BR (C000100W403A) and ROW (C000100W404A) models